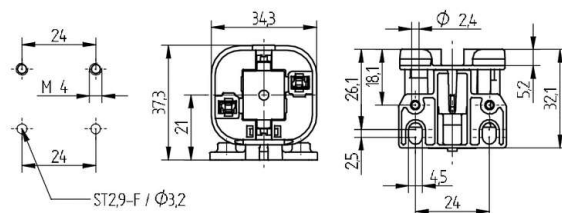


 Create pdf

Lampholders for compact fluorescent lamps

26.745.2321

G24 / GX24



colour	pkg.	wt.	part no.
white	250	10 g	26.745.2321.50

Key: d-2 (18 Watt)

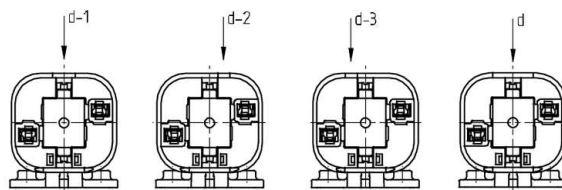
Approval: additional cULus




For lamps TC-D, TC-T

Screw fixing horizontally

Housing: PBT

- Long holes $\varnothing 4.5 \times 2.5$ mm for screws ISO 1207 - M4
- Holes $\varnothing 2.4$ mm for self-tapping screws ISO 1481 - ST2.9 - F
- Please note the base diameter (max. $\varnothing 61$ mm) for lamps with base GX 24.
- If required screw fixing foot 26.745.-440. 50 and lampholders can be supplied separately



T 140		 0.5 - 1.0 mm ²	 18 AWG 0.5 - 1.0 mm ²
-------	---	--	--

Document generated on: We, 8. February 2017 - 16:55